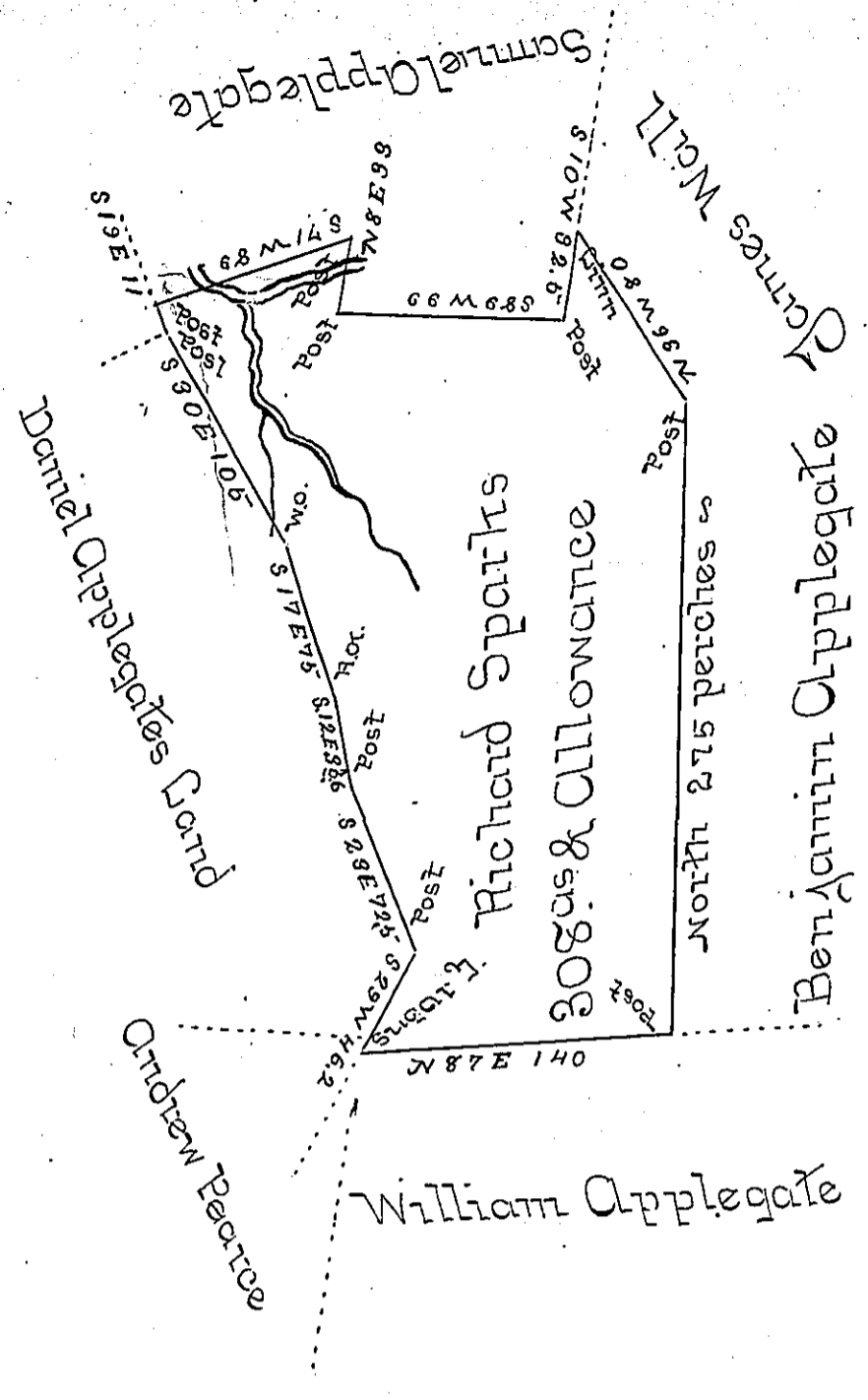


swy-248



Situated on a branch of Perry's Mill Run in Rostaver Township  
 Westmoreland County and surveyed the 15<sup>th</sup> Day of May 1787  
 In Pursuance of a Warrant dated the 10<sup>th</sup> Day of July 1786

To John Bukens Esquire } per Alexander M. Clean Dep<sup>y</sup>  
 Surveyor General }

Now Allegheny County

IN TESTIMONY that the above is a copy of the original remaining on file in the  
 Department of Internal Affairs of Pennsylvania, made con-  
 formably to an Act of Assembly approved the 16th day of  
 February, 1833, I have hereunto set my Hand and caused  
 the Seal of said Department to be affixed at Harrisburg, this  
 second day of November 1897.

*James W. Pitts*  
 Secretary of Internal Affairs.